



# 1515 Blanshard Art Gallery, Artist Profiles

As part of a continuing series, we feature the profiles of two more artists whose works are part of the art galleries at the Ministry of Health.



## Raintree Shipman The Power of Imagination

Inspiration comes in many forms and places. For 23-year-old Lower Mainland resident Raintree Shipman, her inspiration originally came from trauma at a young age. Rain experienced a difficult childhood and began to look for places to hide in her imagination. This sparked her early love of National Geographic magazines.

**Rain says, "I was completely immersed in those pages – not only reading but in studying the pictures – even the ads. I was in love with it."**

Her passion for art and photography came from that feeling of safety found in those pages.

Rain enjoys discovering new things every day as a photographer.

### Rain's Approach to Art

Due to Rain's early development of her imagination, now just about anything can inspire her to create works of art. As Rain notes, "Once I saw a pile of car jack stands and thought that it looked just like the Eiffel Tower." She's quick to adapt to get the perfect shot, whether that means adjusting the shutter speed on the camera to suit an action piece or propping it up on a stack of books because her tripod is missing.

Rain does not limit herself to a specific creative space – although she does prefer nature, including forests, fields, and flowerbeds. In addition, Rain has personalized her camera, naming it Frank and ensuring it is with her when she is out and about.

### Rain's Displays at the Ministry

Rain is still in disbelief that her work is on display at the ministry. Her favourite piece on display is a shot of a black and yellow butterfly. As Rain describes, she happened to be walking around an empty parking lot when she saw a large butterfly. Rain followed it through the parking lot, where it eventually landed in some blackberry bushes, staying there long enough for her to get some impressive shots. With pride, Rain highlights that it is "such a clear shot, that you feel like it could fly right off the page." She considers herself lucky to have been in the right place at the right time.

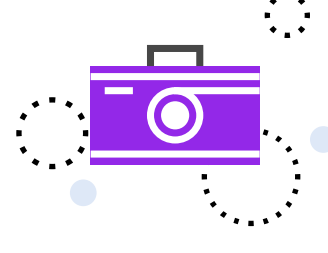
## The Importance of the Ministry Galleries

Having her work displayed at 1515 Blanshard has given Rain a new perspective as an artist.

**"It took me a while, but I realized that people actually saw my art, not to just look at it, but to see it."**

Rain says that feeling made her realize that she truly has talent as an artist and a photographer.

Rain urges anyone interested in art to explore it. "There are hidden doors everywhere in your imagination, and you will eventually find those keys that lead to unbelievable possibilities and wonders."



## Camille Redoblado From Anime to Abstract

Camille Redoblado is a high-school student from the Lower Mainland who has her work featured in the Gallery 5 art space for the first time. Drawing and painting have been central for Camille since she was 11 years old. Over the years, her style has evolved to reflect her changing tastes. As Camille describes her evolution, "I originally drew a lot of movie and anime characters when I was a kid, but as I grew up, I became tired of referenced drawings, so I tried abstract and landscape paintings, which I now love doing."

**In addition to the passion that came with her changing art style, Camille now focuses on "one of the most important aspects to her art – the meaning and the message that it could convey."**

### Camille's Approach to Art

For Camille, the creative approach to her art lies in theme and emotion. When creating her art pieces, Camille first thinks about a particular theme or feeling that she wants to express - regret, guilt, happiness or others. To make it more personal for her, Camille often lands on a specific feeling or theme that she can most relate to at the time as it "makes her art... more her art." Unlike many other artists who will start with sketches or doodling, Camille says she begins by writing down the thoughts and feelings that pop into her head, so that when the time comes for her to start drawing or painting, she has a little description of what she wants the piece to look like and what it will convey.

As for her favourite location to create, Camille initially preferred painting in her bed but found that to be a risky place for paints, so she currently (and happily) paints at her desk.

### Camille's Displays at the Ministry

Camille's debut painting, 'Still Learning,' is now being featured at the ministry's Gallery 5. Camille says she created this piece when she was "not in the best mentally." She painted it to ease her mind and give her a distraction. While putting it together, Camille noticed that the painting was taking on a message of what she was going through at the time – that sometimes you can get frustrated "while growing up and learning to understand life and yourself." Camille describes painting as a calming activity for her. She finds it ironic that the painting about frustration is now her favourite piece because of what she learned while creating it.



## The Importance of the Ministry Galleries

Having her art displayed at the galleries at 1515 Blanshard means a great deal for Camille, as she feels that Gallery 5 is on the path she wants her art to travel down. Camille dreams of having her own art show one day. She says having some of her favourite pieces displayed at the gallery feels like her dreams are coming to life.

Camille recently traveled to Victoria with her family to see her art displayed. While there, Camille presented another of her paintings to B.C.'s Provincial Health Officer, Dr. Bonnie Henry. That painting, titled 'The End: Goodbye' is now also on display as part of the ministry's Dr. Bonnie Henry Tribute exhibit.

We welcome your input and feedback. Contact us at: [MOHNewsletter@gov.bc.ca](mailto:MOHNewsletter@gov.bc.ca)

